

Lisa Corinne Davis' intricate map-like paintings – which fall somewhere between cartooning and cartography, abstraction and figuration – explore racial, social, and psychological identity. Davis is represented by GP Contemporary/Gerald Peters Gallery, is Professor of Painting at Hunter College in New York, and is a frequent contributor to the *Brooklyn Rail*. Her work is included in the collections of The Museum of Modern Art in New York, the J. Paul Getty Museum in Los Angeles, The Philadelphia Museum of Art, and the Victoria and Albert Museum in London. She is the recipient of numerous awards, including The Louis Comfort Tiffany Award, a National Endowment for the Arts Visual Artist Fellowship, and two New York Foundation for the Arts Visual Arts Fellowships.

A 2014 article by Davis, titled "Representing Rainbows" and published by the *Brooklyn Rail*, was the impetus for this show.

GP Presents is a recently established contemporary curatorial/project-based exhibition program of Gerald Peters Gallery, NY located on Manhattan's historic Upper East Side.

For more information or images contact:

Anna Ortt

Director, GP Presents

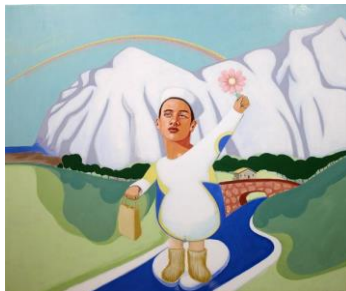
212-628-9760 or aortt@gpgalleryny.com

www.GPPresents.com

*The gallery will be closed August 27th – September 5th.



Lisa Hoke
Clipped, 2015
cardboard, cable ties and glue
10 x 9 x 5 1/2 inches



David Humphrey
Thanks!, 2003
acrylic on canvas
60 x 72 inches



Ugo Rondinone
achtzehntermärzzweitausendundsechz
ehn, 2016
acrylic on canvas
36 x 24 inches



Trenton Doyle Hancock
Chiro Gyro, 2009
acrylic and mixed media on paper
26 x 26 inches



Annie Ewaskio
Dark Mountain, 2014
oil on canvas
36 x 36 inches



Siobhan McBride
Gray Diapason, 2016
gouache on paper on panel
16 x 20 inches